



Learning Spaces Global

14302 Transitional Trundler



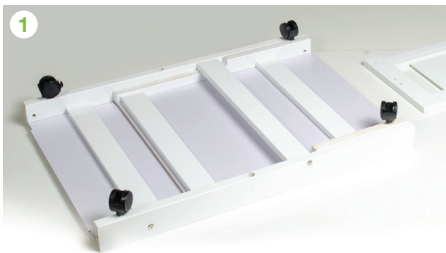
HARDWARE:

A Base. **B** Headboard.
C Side rail x2. **D** Foot.

Parts:

E Castor wheels x4. **F** 70mm bolts x2. **G** Dowels x4.
H Allen keys. **I** 50mm bolts x6. **J** Insert nuts x6.

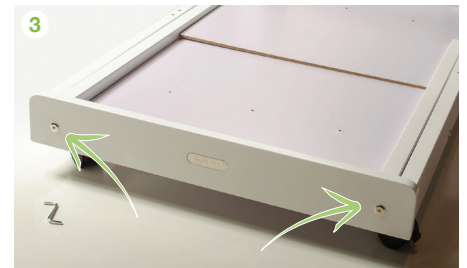
Assembly Instructions



Push castor wheels into bottom side of base.



Assemble foot onto base using 1x insert nut (2A) and 1x 50mm bolt (2B) on each side of foot end.



Tighten 50mm bolts into insert nuts with Allen key.



Assemble head board with 2x 50mm bolts and tighten with Allen key.



Prepare parts to assemble side rail: 1x insert nut, 2x 50mm bolts, 2x dowels.



Turn trundler on its side and insert the dowel on the long edge of side rail into headboard, before inserting the short edge dowel into base.



Insert 50mm bolt through headboard into side rail and tighten with Allen key.



Insert 70mm bolt through base into side rail and tighten with Allen key (repeat steps 5-8 for side rail on opposite side of trundler).